

# SUNMI V2s Smart Mobile Terminal New

Your digital partner to leap forward.

Standard / Label & NFC / Label & Scanner / GMS / Industry Tailored

## Beyond performance

As SUNMI's first smart terminal with SUNMI OS based on Android 11, V2s is equipped with an upgraded quad-core 2.0GHz CPU and 2G RAM +16G ROM memory and demonstrates enhanced operating speed\*. The built-in 3500mAh removable battery enables a smooth and long-lasting experience.

\*Compared to SUNMI V2.

## Ticket and label printing

Dual printing for ticket and label printing, with SUNMI's label position auto-detection algorithm for a more accurate printing. A new movable fixator has been designed to enhance paper roll installation and make it more stable.

## 2D scan engine

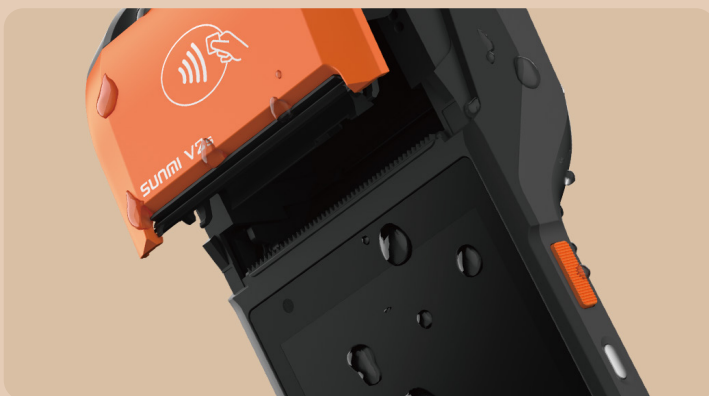
Upgraded to a professional 2D scan engine, to read 1D/2D barcodes even if scratched, folded or stained.

## Strengthened protection

Rubber seals added to the edges of the paper bin, charging port, and earphone port help prevent water, oil and dirt damages.

Reinforced protection to resist 1.2m drop\*.

\*Data from Sunmi Lab



# SUNMI V2s Tech Specs

## General Configuration

|   |  |  |  |   |
|---|--|--|--|---|
| <b>Model Approved</b><br>T5940<br>T5941               | <b>OS</b><br>Android 11<br>Sunmi OS  | <b>Processor</b><br>Quad-Core 2.0GHz   | <b>Display</b><br>5.5"HD+, 1440×720,<br>18:9 IPS | <b>Audio</b><br>1*1W<br>95dB  |
| <b>Communication</b><br>4G/3G/2G                      | <b>Wi-Fi</b><br>2.4GHz/5GHz<br>IEEE 802.11 a/b/g/n/ac  | <b>Bluetooth</b><br>Support Bluetooth<br>2.1GHz/3.0GHz/4.2GHz<br>Support BLE | <b>GPS</b><br>GPS, AGPS                          | <b>Battery</b><br>Removable,<br>Lithium Polymer battery<br>7.7V/3500mAh<br>(equal to 3.85V/7000mAh) |
| <b>Charger</b><br>INPUT: AC 100~240V<br>OUTPUT: 5V/2A | <b>Dimensions (L*W*H)</b><br>219.1*80*17.8 mm  | <b>Weight</b><br>417g (including battery)<br>300g (without battery)          | <b>Drop Test</b><br>1.2m<br>*Data from Sunmi Lab | <b>Environment</b><br>Operating temp: 0~45°C<br>Storage temp: -40~70°C                              |
| <b>Base (Optional)</b><br>Multi-function Base         | <b>Industry tailored module</b><br>Built-in professional module card slot provides industry module customization services (Please consult sales for details) |  |  |   |

| Version                       | Standard   | Label & NFC  | Label & Scanner  | GMS   | Industry Tailored  |
|-------------------------------|--|--|--|---|--|
| <b>Camera</b>                 | Rear: 5.0MP Auto Focus with Flash LED<br>Support 1D/2D   | Rear: 5.0MP Auto Focus with Flash LED<br>Support 1D/2D<br>Front:2MP FF   | Rear: 5.0MP Auto Focus with Flash LED<br>Support 1D/2D<br>Front: 2MP FF  | Rear: 8.0MP Auto Focus with Flash LED<br>Support 1D/2D<br>Front: 2MP FF (Optional)  | Rear: 5.0MP Auto Focus with Flash LED<br>Support 1D/2D   |
| <b>Memory</b>                 | 2GB RAM+16GB ROM   | 2GB RAM+16GB ROM   | 2GB RAM+16GB ROM   | 3GB RAM+32GB ROM  | 2GB RAM+16GB ROM   |
| <b>NFC</b>                    | Not Supported  | Supports Type A&B card, Mifare card, Felica card; ISO/IEC 14443 and ISO15693 compliant   | Supports Type A&B card, Mifare card, Felica card; ISO/IEC 14443 and ISO15693 compliant   | Optional  | Supports Type A&B card, Mifare card, Felica card; ISO/IEC 14443 and ISO15693 compliant                   |
| <b>Scanner</b>                | Not included   | Not included   | 2D barcode scan engine   | Not included  | Optional   |
| <b>PSAM slot</b>              | Not supported  | PSAM *2  | PSAM *2  | Optional  | PSAM *1  |
| <b>SIM &amp; MicroSD Slot</b> | Nano SIM *2<br>MicroSD *1  | Nano SIM *2<br>MicroSD *1  | Nano SIM *2<br>MicroSD *1  | Nano SIM *2<br>MicroSD *1   | Nano SIM *1<br>MicroSD *1  |
| <b>Printer</b>                | High speed, 58mm thermal printer<br>Print speed: 80mm/s<br>Paper roll: Φ40mm<br>Support receipt printing | High speed, 58mm thermal printer<br>Print speed: 80mm/s<br>Paper roll: Φ40mm<br>Support receipt printing<br>Support label printing,<br>Label paper specs:<br>30-58mm wide<br>≥20mm high,<br>2mm wide gap | High speed, 58mm thermal printer<br>Print speed: 80mm/s<br>Paper roll: Φ40mm<br>Support receipt printing<br>Support label printing,<br>Label paper specs:<br>30-58mm wide<br>≥20mm high,<br>2mm wide gap | High speed, 58mm thermal printer<br>Print speed: 80mm/s<br>Paper roll: Φ40mm<br>Support receipt printing<br>Label printing (optional) | High speed, 58mm thermal printer<br>Print speed: 80mm/s<br>Paper roll: Φ40mm<br>Support receipt printing |
| <b>Button</b>                 | 1 * Power Button<br>2* Volume (+/-) Button   | 1 * Power Button<br>2* Volume (+/-) Button   | 1 * Power Button<br>2* Volume (+/-) Button<br>Scan Left/Right  | 1 * Power Button<br>2* Volume (+/-) Button  | 1 * Power Button<br>2* Volume (+/-) Button   |
| <b>Interface</b>              | Support Type-C,<br>Support OTG<br>Support 3.5mm earphone jack  | Support Type-C,<br>Support OTG<br>Support 3.5mm earphone jack  | Support Type-C,<br>Support OTG<br>Support 3.5mm earphone jack  | Support Type-C,<br>Support OTG<br>Support 3.5mm earphone jack   | Support Type-C,<br>Support OTG   |